



Science For A Better Life

Integration of FDSS 7000 into Beckman HTS Screening System

Hardware and Software Integration

11. June 2015, Jörg Fischer, V1.0

Bayer CropScience Research Campus in Monheim





FDSS7000 - Buying process

Order in June 2012

Delivery, Installation and Integration
December 2012

Delivery SAMI device driver March 2013

The High Throughput Screening System at Bayer CropScience



The High Throughput Screening System at Bayer CropScience



Hardware Integration

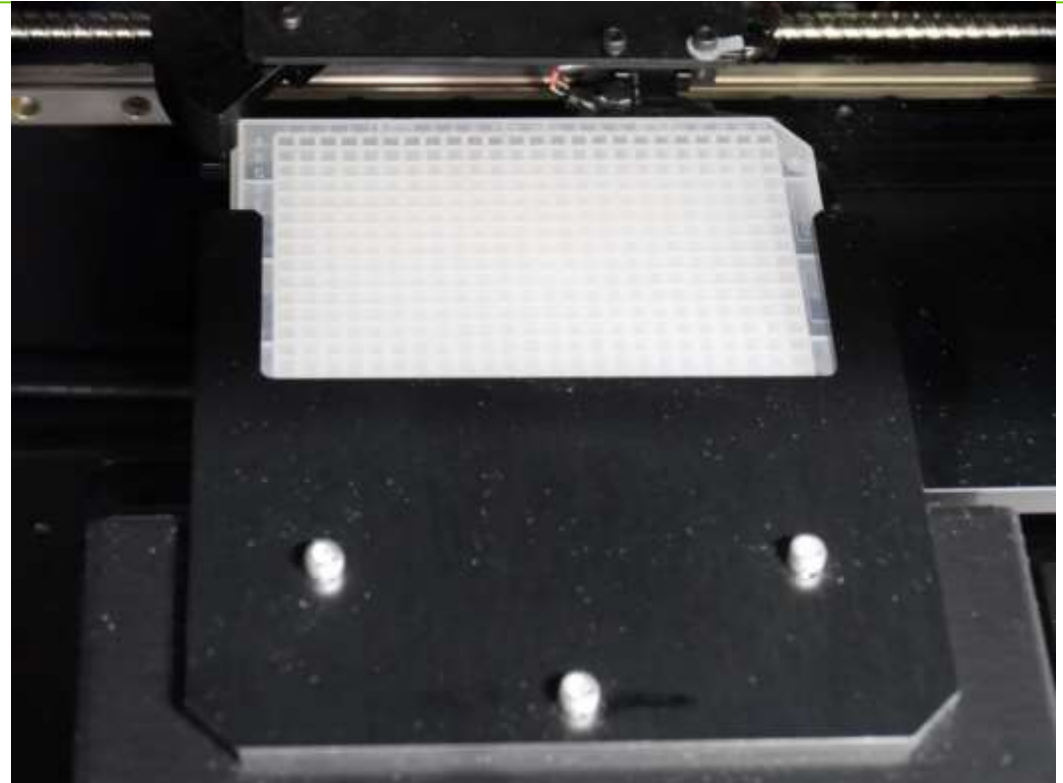
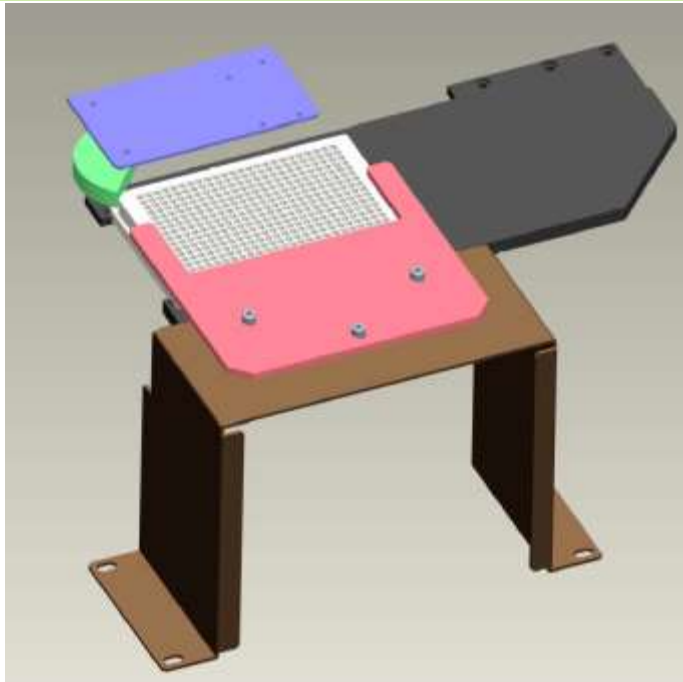


Connecting devices

- Servo Shuttle
- BRT



Holding down clamp

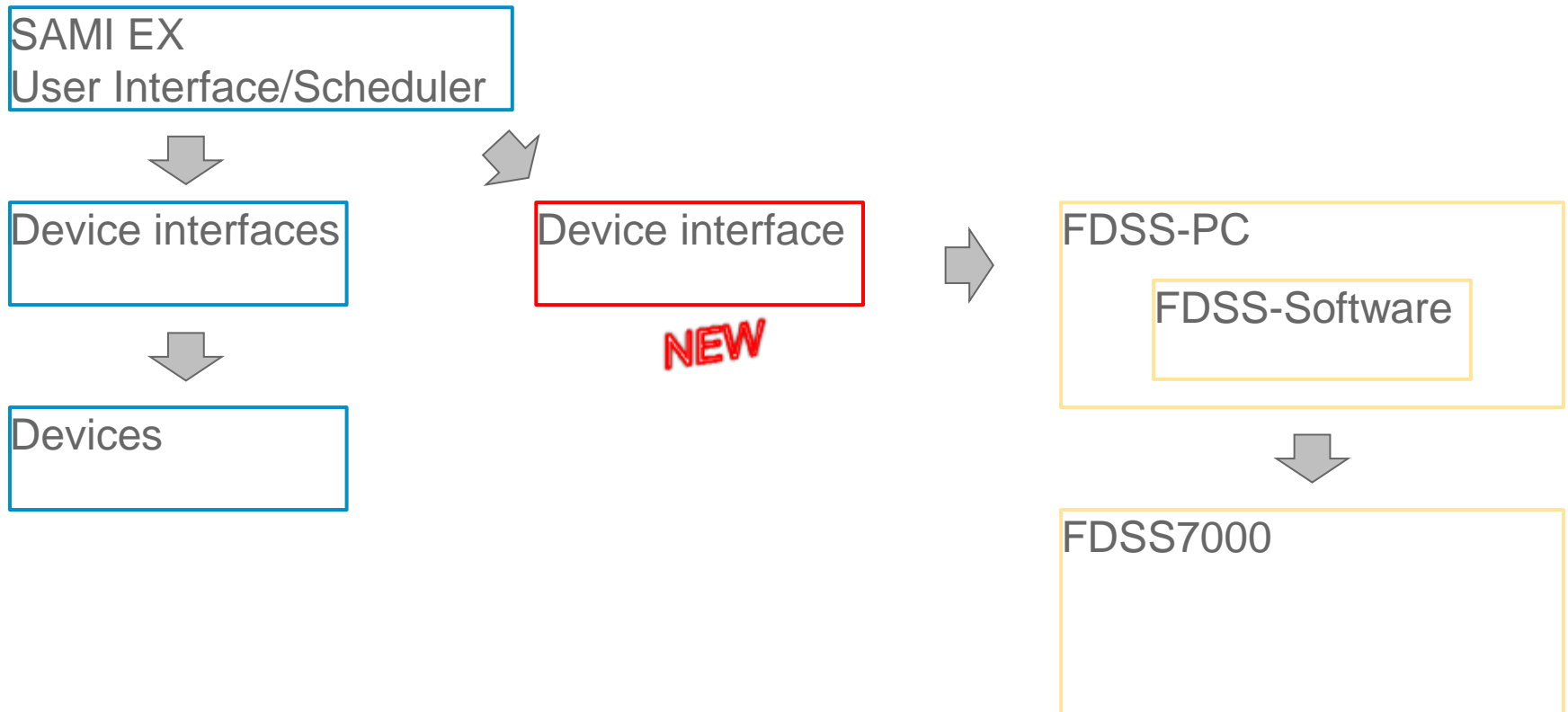


DMSO resistant pumps

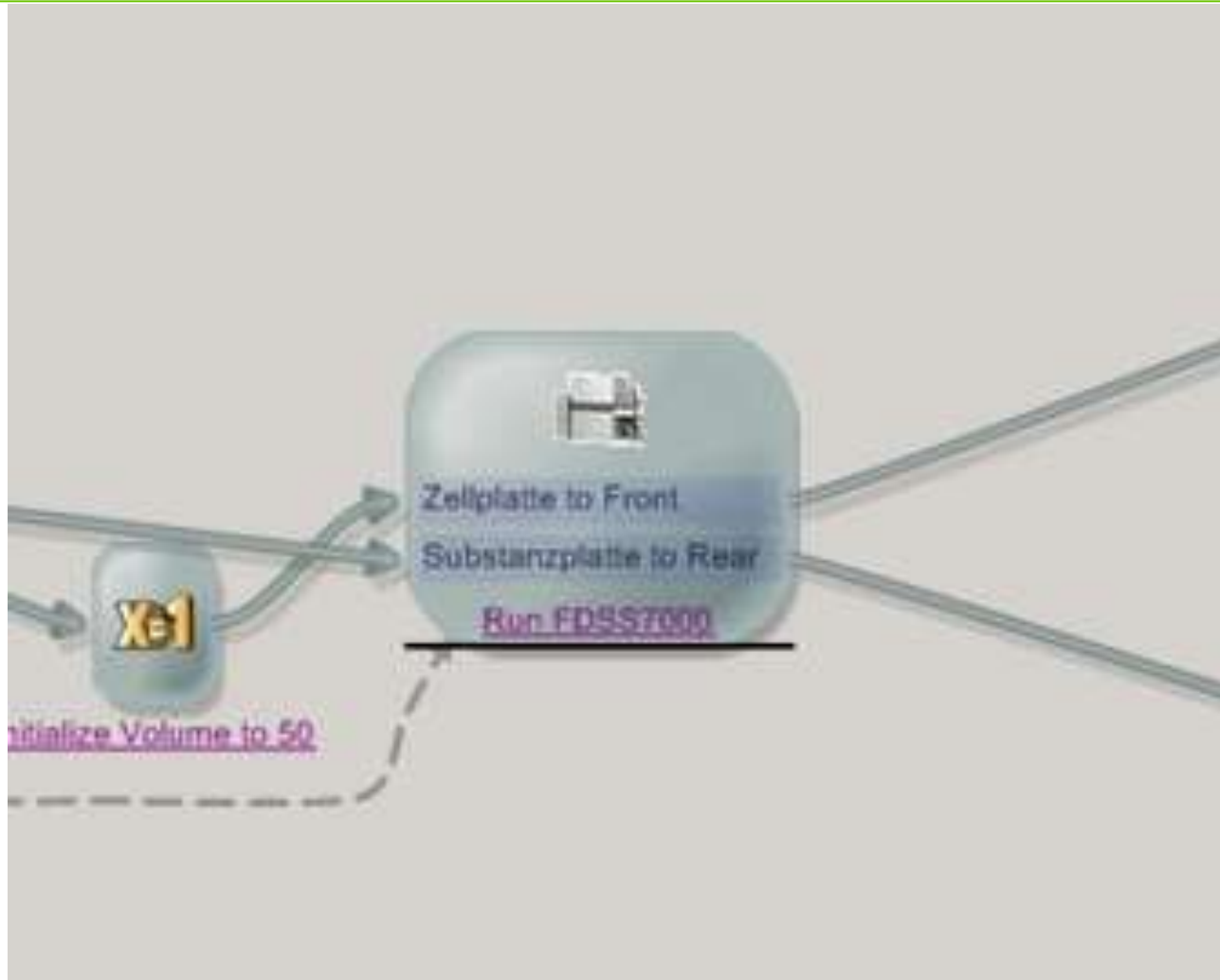
Masterflex pump drives
Masterflex teflon membrane heads



Software Integration

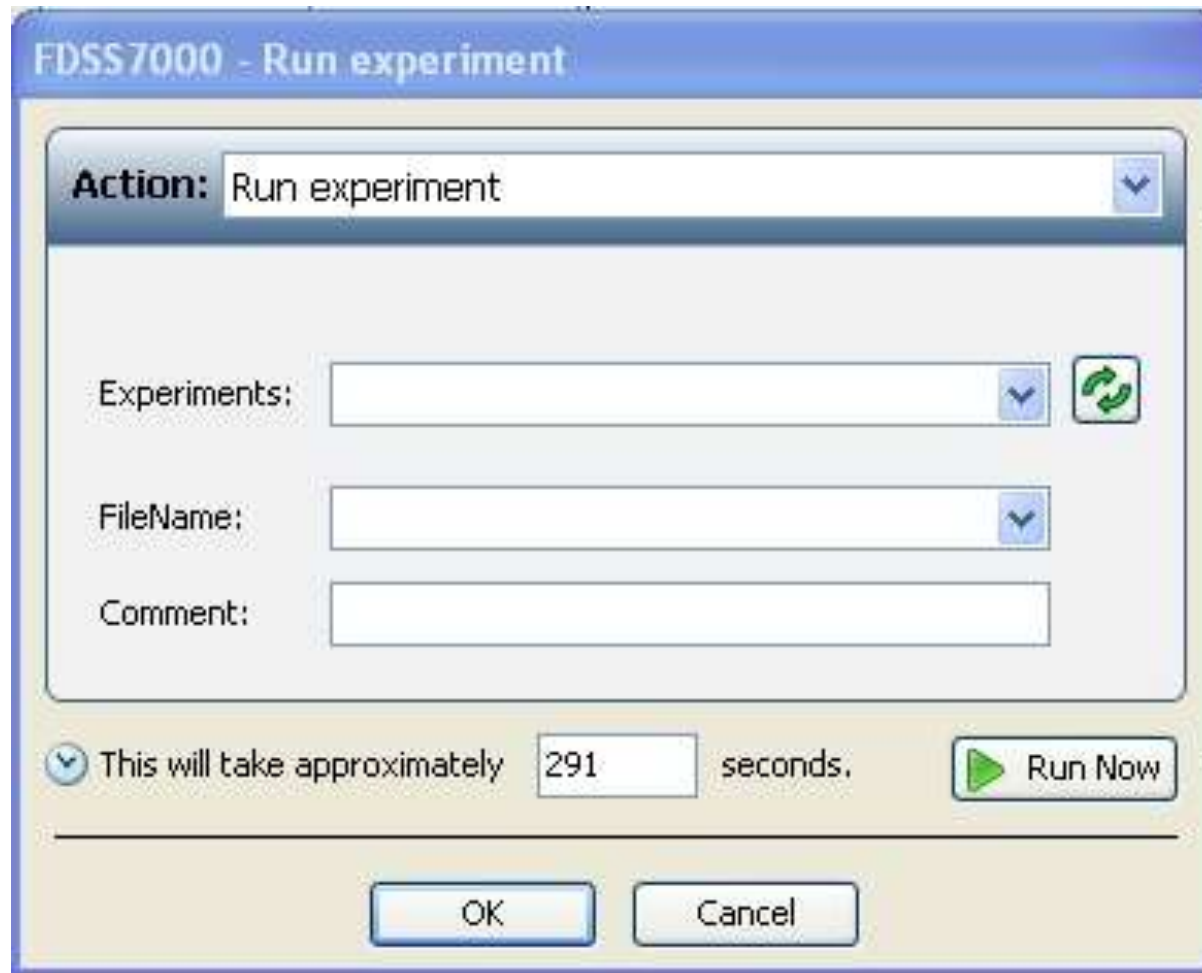


User Interface for FDSS in SAMI EX





User Interface for FDSS in SAMI EX





Science For A Better Life

Thank you!

11th June 2015, Jörg Fischer Bayer CropScience, V1.0